

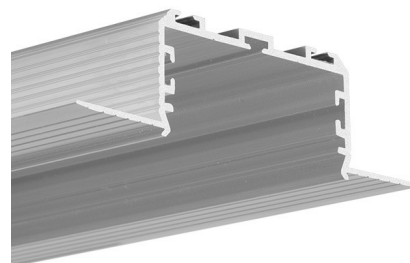
## PRODUCT DESCRIPTION

- Line of light
- Concealed aluminum elements

FINISH :

Non anodized (raw) 

Fill empty fields



Product nr.	
Fixture type	
Company	
Job name	
Date	

## TECHNICAL SPECIFICATION

### Application

- for creating a line of light flush with the surface of walls and ceilings

### Assembly

- fixed in the groove with mounting adhesive
- profile fastening wings covered with gypsum plaster
- the protective insert TECH-50 ensures that the profile slot remains wide enough for the snap-in cover (its use is necessary during mounting and finishing works)

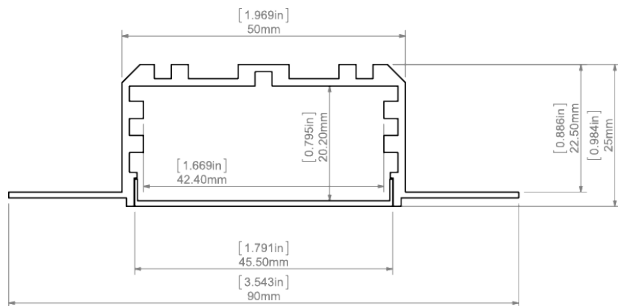
### Additional information

- designed for up to four 10 mm wide LED strips
- line of light obtainable with the LIGER-50 cover and LED strips with a minimum of 120 LED/m
- the cover is evenly illuminated with four LED strips, with fewer strips shadows appear on the cover
- the KOZEL-50 profile is equipped with ZM sockets (ZM Connectors are used to connect profiles lengthwise, they are easily accessible even after mounting the profile in the ceiling)
- the groove cut out in the drywall to accommodate the profile should be 51mm - 56mm wide
- when mounted in double drywall, the profile does not interfere with the structure

## AVAILABLE LENGTHS

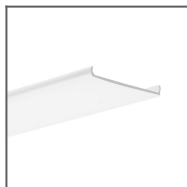
Ref. nr.	surface finish	available lengths
C0757NA_1	Non anodized (raw)	1000 mm
C0757NA_2	Non anodized (raw)	2000 mm

Ref. nr.	surface finish	available lengths
C0757NA_3	Non anodized (raw)	3000 mm

**TECHNICAL DRAWING**

## RELATED PRODUCTS

### COVERS



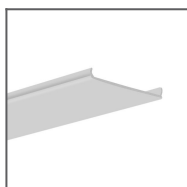
LIGER-50 frosted  
Cover  
Ref: 17086

### END CAPS



KOZEL-50 grey  
End cap  
Ref: 24280

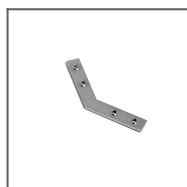
### ACCESSORIES



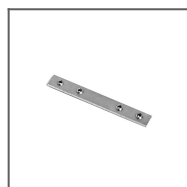
TECH-50  
protective insert  
Ref: 17125



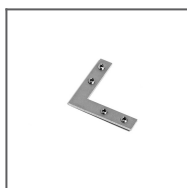
8,8x1,2 Gland  
Ref: 00802



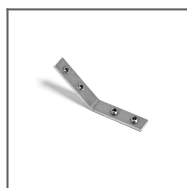
ZM-NA-135  
Connector  
Ref: 42725



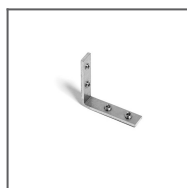
ZM-NA-180  
Connector  
Ref: 42724



ZM-NA-90  
Connector  
Ref: 42723



ZM-NA-PION-135  
Connector  
Ref: 42727



ZM-NA-PION-90  
Connector  
Ref: 42726

### MARKETING MATERIALS



KOZEL-50,  
KOZUS-50 Foam  
Ref: 70265